

SHBxR SINGLE ENDED BEAM LOAD CELL



DESCRIPTION:

The SHBxR is a fully weld-sealed stainless steel bending beam type load cell.

This product is suitable for low capacity platform scales, packaging machines, hybrid scales and process weighing.

Fully welded construction and water block cable-entry ensure that this product can be used successfully in harsh environments found in the food, chemical and allied industries.

This product meets the stringent Weights and Measures requirements throughout Europe.

FEATURES:

- # Fully welded, stainless steel construction
- # Hermetically sealed, IP66 and IP68
- # Certified to OIML R-60, **4000d**
- # EEx(i) versions are available for use in hazardous areas
- # Current calibration output (SC version) ensures easy and accurate parallel connection of multiple load cells
- # **CAPACITIES: 5 6 500kg**

Revere  Transducers

www.instrotech.com.au

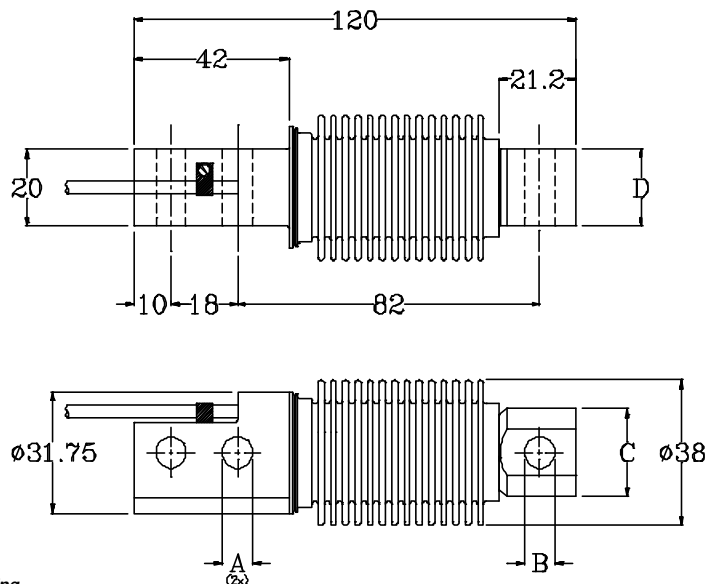
SHBxR: SPECIFICATIONS

Standard Capacities (= E _{max})	Kg	5 ² , 10, 20, 30, 50, 100, 200, 350, 500				100 ³ , 200 ³ , 350 ³ , 500 ³	
Accuracy Class According to OIML R-60			C2	C3	C4	C3MI6	C3MI7.5
Max. Number of Verification Intervals (n _v)			2000	3000	4000	3000	3000
Minimum Verification Interval (V _{min})			E _{max} /10000	E _{max} /15000	E _{max} /15000	E _{max} /15000	E _{max} /15000
Minimum Utilisation	%		20	20	25	20	20
MDLOR (Z= E _{max} / 2*DR)			--	--	--	6000	7500
Accuracy According to Type Designation		CC	C2	C3	C4	C3MI6	C3MI7.5
Combined Error	%S	#" 0.0500	#" 0.0230	#" 0.0200	#" 0.0170	#" 0.0200	#" 0.0200
Non-Repeatability	%S	#" 0.0200	#" 0.0100	#" 0.0100	#" 0.0090	#" 0.0100	#" 0.0100
Minimum Dead Load Output Return ¹	%S	#" 0.0500	#" 0.0250	#" 0.0167	#" 0.0125	#" 0.0083	#" 0.0067
Creep Error (30 Minutes) ¹	%S	#" 0.0600	#" 0.0245	#" 0.0245	#" 0.0184	#" 0.0245	#" 0.0245
Creep Error (20-30 Minutes) ¹	%S	#" 0.0200	#" 0.0053	#" 0.0053	#" 0.0039	#" 0.0053	#" 0.0053
Temp. Effect on Min. Dead Load Output	%S/5EC	#" 0.0250	#" 0.0070	#" 0.0047	#" 0.0047	#" 0.0047	#" 0.0047
Temp. Effect on Sensitivity	%S/5EC	#" 0.0250	#" 0.0060	#" 0.0050	#" 0.0045	#" 0.0050	#" 0.0050
Minimum Dead Load	%E _{max}	0					
Maximum Safe Overload	%E _{max}	150					
Ultimate Overload	%E _{max}	300					
Maximum Safe Sideload	%E _{max}	100					
Deflection at E _{max}	mm	0.30 " 0.03					
Excitation Voltage	V	5...12					
Maximum Excitation Voltage	V	15					
Rated Output (= S)	mV/V	2					
Tolerance on Rated Output	mV/V	" 0.02					
Zero Balance	%S	#" 1.0					
Input Resistance	Ω	460 " 50					
Output Resistance	Ω	350 " 3.5					
Insulation Resistance	MΩ	\$ 5000					
Compensated Temperature Range	EC	-10... + 40					
Operating Temperature Range	EC	-40... + 80					
Storage Temperature Range	EC	-40... + 90					
Element Material (DIN)		Stainless Steel 1.4542					
Sealing (DIN 40.050)		IP66 and IP68					
SC-Version (Current Calibration)		Standard					
Recommended Torque on Fixation Bolts	Nm	23 (70 for 350/500kg)					
EEx(i) Certification		EEx ib IIC T6 / EEx ib IIC T4					

- 1 Applies for the temperature range -10 to + 40 EC
 2 CC quality only
 3 D_{max} = 0.75 * E_{max}

"SC-Version" The "Rated Output" and the "Output Resistance" are balanced in such a way, that the output current is calibrated within 0.05% to a reference value. This allows an easy parallel connection of load cells.

Accuracy classes C2, C3, C3MI6, C3MI7.5 and C4 are in agreement with the OIML recommendation R-60. Accuracy class C1 is also available. The correct mounting of the load cells is essential to ensure optimum performance. Cable length 3m. Cable screen is not connected to load cell body. 6-wire cable optional, 4-wire cable standard. Further information is available on request.



Wiring
 Excitation + Green
 Excitation - Black
 Output + White
 Output - Red
 (Sense + Yellow)
 (Sense - Blue)
 Shield Transparent

E _{max}	56200	350/500
A	8.2	10.3
B	8.2*8 ¹	10.3*8 ¹
C	23.0	24.0
D	20.0	19.0

Dimensions: mm.
 All dimension tolerances according to DIN 7168; middle accuracy unless otherwise specified.

Instrotech Australia Pty Ltd
 PO Box 3137
 Newton SA 5074
 Tel.: + 61 8 8337 8033
 Fax.: + 61 8 8337 8656
 Email: sales@instrotech.com.au

All specifications subject to change without notice.