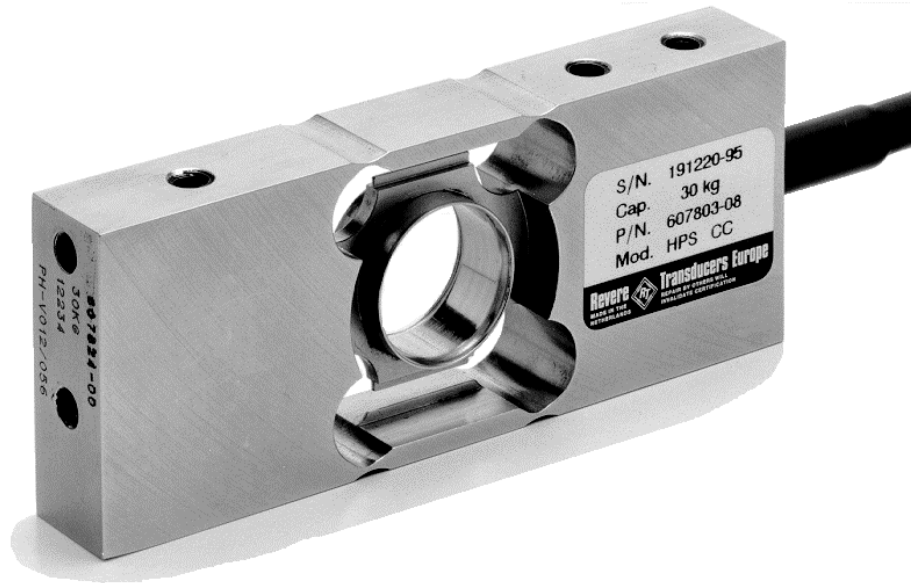


HPS SINGLE POINT LOAD CELL



DESCRIPTION:

The HPS is a unique fully welded all stainless steel single point (moment insensitive) load cell.

This product is suitable for low capacity platform scales, multi-head packaging machines, check weighers, loss-in-weight feeders, belt scales and general process weighing applications.

The unique construction ensures that this product can be used successfully in harsh environments found in the food, chemical and allied industries.

This product meets the stringent Weights and Measures requirements throughout Europe.

FEATURES:

- # Fully welded, stainless steel construction
- # Hermetically sealed, IP66 and IP68
- # Certified to OIML R-60, **3000d**
- # EEx(i) versions are available for use in hazardous areas
- # Comprehensive mounting hole facility
- # Moment insensitive, platform size to 350 x 350mm
- # **CAPACITIES: 6 - 60kg**

Revere  Transducers

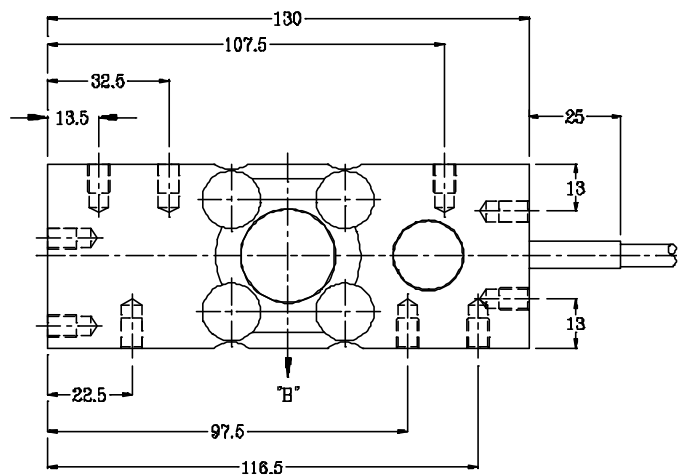
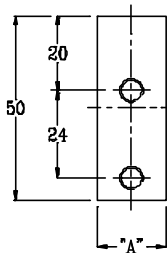
www.instrotech.com.au

HPS: SPECIFICATIONS

Standard Capacities (= E _{max})	Kg	6, 12, 30, 60			
Accuracy Class According to OIML R-60		CC	C1	C2	C3
Max. Number of Verification Intervals (n _v)			1000	2000	3000
Minimum Verification Interval (v _{min})			E _{max} /5000	E _{max} /10000	E _{max} /12000
Minimum Utilisation	%		20	20	20
Accuracy According to Type Designation		CC	C1	C2	C3
Combined Error	%S	#" 0.0500	#" 0.0300	#" 0.0230	#" 0.0200
Non-Repeatability	%S	#" 0.0200	#" 0.0200	#" 0.0100	#" 0.0100
Minimum Dead Load Output Return ¹	%S	#" 0.0500	#" 0.0500	#" 0.0250	#" 0.0167
Creep Error (30 Minutes) ¹	%S	#" 0.0600	#" 0.0490	#" 0.0245	#" 0.0245
Creep Error (20-30 Minutes) ¹	%S	#" 0.0200	#" 0.0105	#" 0.0053	#" 0.0053
Temp. Effect on Min. Dead Load Output	%S/5EC	#" 0.0250	#" 0.0140	#" 0.0070	#" 0.0058
Temp. Effect on Sensitivity	%S/5EC	#" 0.0250	#" 0.0080	#" 0.0055	#" 0.0045
Minimum Dead Load	%E _{max}	0			
Maximum Safe Overload	%E _{max}	150			
Ultimate Overload	%E _{max}	300			
Maximum Safe Sideload	%E _{max}	100			
Deflection at E _{max}	mm	0.24 ± 0.02 / 0.19 ± 0.01 / 0.15 ± 0.01 / 0.22 ± 0.03			
Excitation Voltage	V	5...12			
Maximum Excitation Voltage	V	15			
Rated Output (= S)	mV/V	2			
Tolerance on Rated Output	mV/V	" 0.2			
Zero Balance	%S	#" 1.0			
Input Resistance	Ω	400 " 6	410 " 6		
Output Resistance	Ω	350 " 7			
Insulation Resistance	MΩ	\$ 5000			
Compensated Temperature Range	EC	-10... + 40			
Operating Temperature Range	EC	-40... + 80			
Storage Temperature Range	EC	-40... + 90			
Element Material (DIN)		Stainless Steel 1.4542			
Sealing (DIN 40.050)		IP66 and IP68			
Eccentric load effect ²	%S	0.03(version 1)/ 0.3(version 2)			
Recommended Torque on Fixation Bolts	Nm	6			
EEx(i) Certification		EEx ib IIC T6 / EEx ib IIC T4			

- 1 Applies for the temperature range -10 to + 40 EC
 2 Applies at 50% x Rated Load at 150mm radius.

Accuracy classes C1, C2 and C3 are in agreement with the OIML recommendation R-60.
 Correct mounting of the load cells is essential to ensure optimum performance.
 Sufficient protection should be given to the load cell to prevent overload from occurring. Protection during transportation of the equipment to which the load cell is fitted, must be considered.
 Cable length 7m. Cable screen is not connected to load cell body. Further information is available on request.



Attention:
 Dimensions: mm.
 All dimension tolerances according to DIN 7168; middle accuracy.

Wiring
 Excitation + Green
 Excitation - Black
 Output + White
 Output - Red
 Sense + Yellow
 Sense - Blue
 Shield Orange

Capacity	6, 12, 30	60
A	18.5	23.5
B	Central Load Axis	
Max. recommended platform size 350mm		
All Threads M6x1 (8 Deep)		

All specifications subject to change without notice

Instrotech Australia Pty Ltd
 PO Box 3137
 Newton SA 5074
 Tel.: + 61 8 8337 8033
 Fax.: + 61 8 8337 8656
 Email: sales@instrotech.com.au